

Tempt  
the big  
ones



with  
Chevy



## *It's Easy to Tie Chevy Flies*

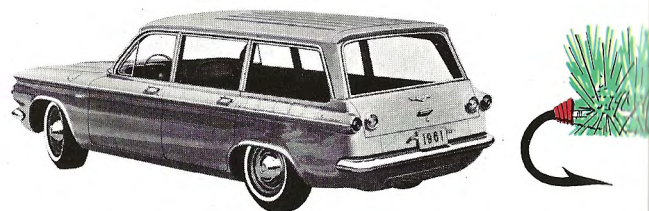
More people drive Chevies than any other car. And more people are taking to the 1961 Chevrolet. They like its functional clean style, its trim new size, its roomy inside dimensions, and its traditional built-in Chevrolet value.

Fish, too, are taking to the Chevrolet features symbolized in the fishing flies of Fred Rea. These flies have captured the acclaim of experienced anglers and others who appreciate the skill and ingenuity involved in tricking a wily trout or bass. And these flies really work.

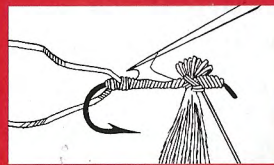
For example, Fred Rea tells of his first experience with the 1914 Chevrolet Dry Fly. He used it one day while casting from the lawn of a friend's cottage on a lake near Detroit. In less than fifteen minutes, the dry fly helped him land six fine bluegills, ranging from eight to ten inches in length!

So try your hand at tying these Chevy flies. The styling features of the 1961 Chevrolets are a big hit with thousands of motorists. See how they work in your favorite fishing spot.

# FOLLOW THESE ST



## *1961 Corvair Lakewood D*

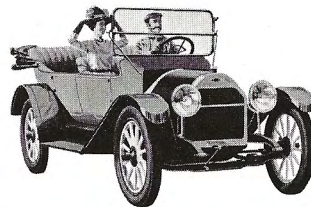


1. (A) Using a #12—2X Long T.D.E. hook, first make a miniature taillight at bend of hook using red A tying thread. Half hitch knot, cement and cut off thread. (B) Now wind on #00 green tying thread and

tie in both ends of a 3" piece of fine silver tinsel close to red taillight. Wind green tying thread to eye and back  $\frac{1}{8}$ " where we tie in a 10" piece of green floss folded double to make 8 strands.



2. Cement green tying thread full length of hook before winding green floss to form the body. Floss must be held firmly as it is spiral wound down to "headlight" and back to be tied off close to eye of hook giving a tapered body. Cement knot.



## *1914 Chevrolet Dry Fly*



# EPS TO MAKE YOUR OWN CHEVY FLIES

Here's a fly inspired by the smart styling of the Corvaair Lakewood. The remarkable Lakewood is the only U.S.-built wagon with both rear cargo space and a key-locking trunk up front. Like all Corvaairs, the Lakewood has all the proven rear engine benefits plus economy and convenience features that make it a big favorite among thrift-minded families.

y Fly



OTHER CORVAIR DRY FLY MODELS. Illustrated at left are dry flies based on other Corvaair models. They are tied in general the same way as the Lakewood except: (1) Use #10 regular 3X fine wire hook. (2) Use 2 small hackle tip feathers for tail instead of red thread for taillight shown on Lakewood fly. Tail is to be of contrasting color to body of fly, i.e.—white tail with red floss, red thread, red body hackle . . . red tail with white floss, white thread, white body hackle . . . white tail with blue floss, blue thread, blue body hackle . . . brown tail with green floss, green thread, green body hackle. (3) Only one body hackle is used, and this covers center  $\frac{1}{3}$  of body only. (4) Corvaair Monza Models—omit tinsel on side of body.



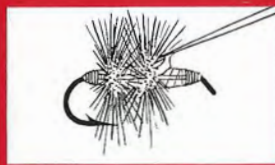
3. Lift tinsel loop over body and tie down at head of fly. Tinsel now runs in horizontal strip along side of body like the aluminum trim molding on the Corvaair Body by Fisher. Trim off surplus tinsel at head.

Complete head windings and cut off thread. Cement heavily full length of body. This protects the blue floss and simulates the Chevy acrylic lacquer finish of the Corvaairs.

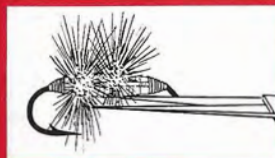


4. Wind on green tying thread near end of body. Half hitch knot and tie in butt end of a green dyed hackle feather which is a matching color to the body floss. Using hackle pliers, spiral wind toward the center of

body. Tie down, cement and cut off hackle tip. Repeat with second hackle feather to cover about  $\frac{2}{3}$  of body. This represents the doors, windows, and windshield of our Corvaair Lakewood. (Fig. 4 shows first hackle in position and "figure 8" wind over quill of second hackle feather.)



5. Tip of second hackle is now cut off as well as tying thread. Cement knot. The Lakewood Station Wagon Dry Fly could be used as shown here; however, see Fig. 6.



6. Now using scissors, cut off all hackle fibers that protrude underneath the fly body. This gives the Lakewood Fly a virtually flat floor like all Corvaairs, and reproduces in miniature the side view of the 1961 Corvaair Lakewood Station Wagon.

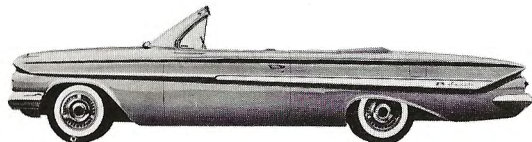


Hook — #12 4X Long ringed eye  
Tail — Black Calftail  
Tip — 1 turn red chenille  
Body — Blue chenille  
Hackle — Black  
Head — Golden yellow silk #00

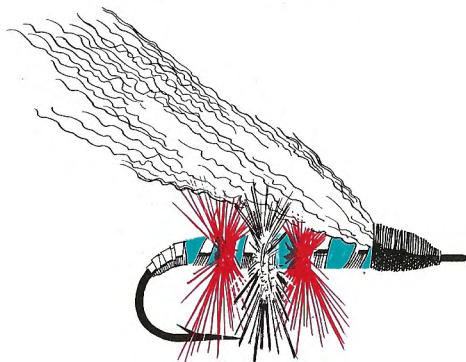
This classic touring car was one of the first Chevrolets. It featured a 4-cylinder valve-in-head engine with a 24-horsepower output. And its 104-inch wheelbase was even shorter than that of today's trim Corvaairs.



# GET STRIKES FROM THE BIG O

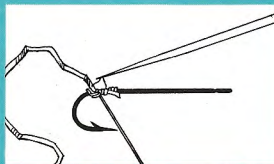


## 1961 Impala Convertible Streamer



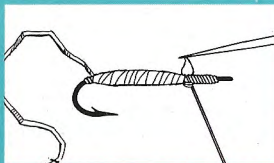
This colorful streamer takes its cue from the luxurious Chevrolet Impala Convertible. At far right are other streamers symbolizing the other two series in the full-sized Chevrolet line (plus the sleek Chevy Corvette).

These full-sized Chevies offer new comfort and convenience for 1961. There are twenty models to choose from. All are trimmer on the outside yet roomier on the inside where it counts. All have the fabulous Chevy Jet-smooth ride. All have the built-in quality and dependability that make Chevrolet the big family favorite.



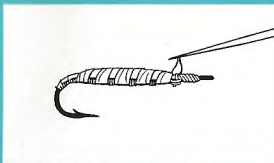
1. Place #8—4X Long ringed eye hook in vise and wrap on 4 or 5 turns of #00 black tying thread at bend of hook. Thread should be 25" or 30" long. Tie off with half hitch knot and use one drop of cement on winding. Like the steel frame of the Chevy, our forged steel hook will be the frame for our Chevy Impala Fly.

Attach a piece of medium sized silver tinsel about 8" long, using "figure 8" wrap over end of tinsel and thread as shown in sketch. This tinsel, like the bright aluminum moldings on the car, will act as a trim for the fly body.



2. Now spiral wind the tying thread closely up to the eye of hook, then back over previous winding about  $\frac{3}{8}$ " and tie off with half hitch. Cement full length of hook. Tie in at this point with 3 or 4 winds of thread a piece of light blue floss. (Floss is 4-strand material; double it to make 8 strands about 10" long and tie to hook on folded end.) The blue floss selected closely matches the 1961 turquoise blue acrylic lacquer finish on Chevy's Body by Fisher.

Spiral wind the turquoise blue floss the length of the hook to the bend, then back to  $\frac{3}{8}$ " from eye, and tie off with 2 or 3 winds of thread and a half hitch knot. Care must be taken in this operation: (a) Keep constant firm pressure on floss and (b) maintain tension until end of floss is tied down firmly. Place cement on knot.



3. Next wind tinsel 2 or 3 turns around bend of hook then spiral wind over floss body about 4 or 5 turns to the end of body and tie down with tying thread and cement. (Again, hold firm until tied down.) Trim off surplus tinsel and floss. Cut off black tying thread. Now we have our fly body completed with a typical Chevy body, color and trim.

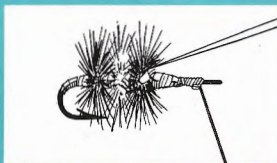


# FLIES WITH THESE CHEVY FLIES



4. Using red #00 tying thread, wind on 2 or 3 turns over body near bend of hook, and tie off with half hitch knot. Over these windings tie in the butt end of a small red dyed hackle feather using a "figure 8"

wrap over the quill after all fuzzy fibers near the butt of the quill have been removed. Trim off surplus quill before winding hackle 2 or 3 turns around body using hackle pliers. Now tie down and cut off surplus tip of feather.



5. Repeat above operation using white hackle feather (for back-up light) followed by a red hackle feather as shown in Fig. 5. Cut off surplus hackle tips. Cement knots. Cut off red tying thread. Rewind black

thread at head of fly half hitch knot. Cement lightly. Now, our fly simulates the Impala distinctive rear end styling.



6. Cut from white calftail (called "Impala" by flytiers) a small piece of hair to form the wings. Holding with thumb and finger of the left hand, wind down on hook with 3 or 4 turns of tying thread. Half

hitch knot into position. Trim off surplus hair at butt end. We now have a white top for our 1961 Impala Convertible Streamer. Its shape is like the sweep of the fenders as we view the Chevy from the rear. Next divide wing in center, winding with "figure 8" turns to hold hair in "V" split position—like the "V" dip in the rear deck of the '61 Chevy. Continue winding to form head, tie off with half hitch knot or whip finish. Cement head heavily and use second cement application after first coat dries.

## 1961 Bel Air Streamer

Hook—#10  $\frac{1}{8}$  inch longer T.D.E.  
 Body—Silver tinsel  
 Body—2 red hackles over tinsel near bend of hook  
 Wing—4 Cochybondue or Furnace hackle feathers over Brown Bucktail  
 Head—Black silk #00



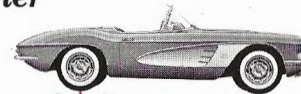
## 1961 Biscayne Streamer

Hook—#8 4X Long ringed eye  
 Body—Peacock Herl with 2 red chenille segments fore and aft  
 Wing—Black dyed Bucktail split-wing tied  
 Head—Black silk #00

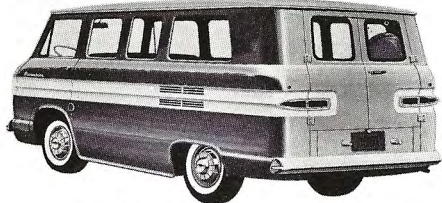


## 1961 Corvette Streamer

Hook—#4 4X Long ringed eye  
 Tail—2 white hackle  
 Body—Silver tinsel  
 Wing—Full-Maribou Plume  
 Cheek—Junglecock Eye  
 Head—Black silk #A





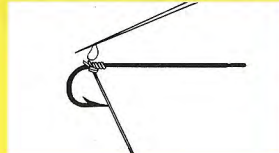


## Greenbrier Sports Wagon Bass Bug

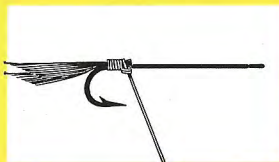


Try this unusual bass bug at your favorite fishing spot. It's based on the Corvair Greenbrier Sports Wagon—the all-purpose vehicle that's made to order for your outdoor expeditions. You'll find the Greenbrier's got plenty of room for your camping and sports gear—almost twice as much cargo space as regular station wagons. And its rear-engine traction gets you to sites that call for off-the-road driving. Ask your Chevrolet dealer about the big selection of camping equipment\* that's been tailor-made for the Greenbrier.

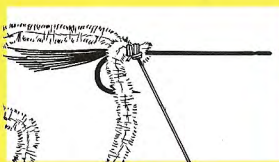
*\*Optional at extra cost.*



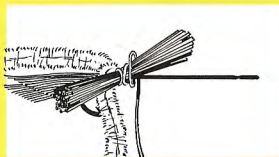
1. Using a #4-4X Long Ringed eye hook, wind on 4 or 5 turns of black #A tying thread and tie off with half hitch knot. Cement thread on hook.



2. Cut two  $\frac{1}{4}$ " sections from a right- and left-hand pair of red dyed quill feathers. Tie these in at bend of hook for a tail. Trim off surplus butt of quills. This will do for the large tail lights on the rear of the Greenbrier Sports Wagon.



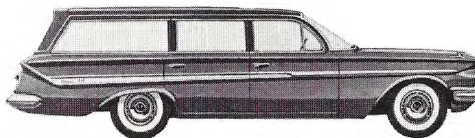
3. Tie in at ends a 5" piece of fine white chenille, forming a loop to be later used for the white trim on our Greenbrier.



4. White deer antelope or goat hair, that has been dyed turquoise, scarlet red or any color to match the many lustrous Greenbrier body colors, is next tied on to form the body. These colors can be dyed with

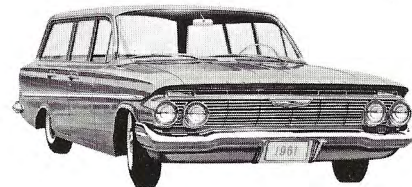
## AND FOR YOUR FISHING OR FAMILY NEEDS, CHEVY OFFERS YOU A CHOICE OF TEN ROOMY WAGONS

There's one to fit your needs and your budget in the most complete lineup of wagons in Chevrolet history. Take your pick of six full-sized Chevy wagons. Or two Corvair Lakewoods. Or two Greenbrier Sports Wagons. Each kind is different. Each one has built-in value and convenience features that make Chevy your most practical buy.



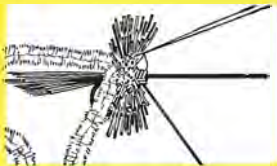
**NOMAD  
6-PASSENGER**

**PARKWOOD  
9-PASSENGER**

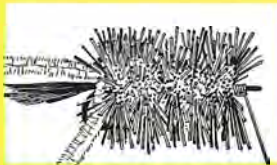


(Step 4—continued)

ordinary dyes available in any drug store. A small bunch of hair that can be conveniently held between the thumb and finger of the left hand is laid diagonally across the hook near the bend. Wind three turns of the tying thread loosely around the hair and hook.



5. Apply heavy pressure-pull on tying thread. As hair begins to fan out around the hook shank, remove left hand. Take a half hitch knot over hook shank in front of hair and push hair back with fingernails as tight as possible. Cement knot.



6. Repeat above procedure with small bunches of hair until hook shank is completely covered with hair. Use drop of cement on thread after each bunch is tied in and worked into position with fingers. Now start forming head of fly with several winds of the tying thread. (It now looks like a ball of fur.)



7. With shears, trim to the contour of the Greenbrier's spacious body, start on bottom close to hook shank to get a flat floor, next—the sides, and last—the top. It is suggested that the fly be removed from the vise for the fur trimming operation. The flytier can protect the tail and loop of chenille by holding them in the fingers of his left hand at the bend of the hook while trimming body. Now place hook back in vise and bring chenille loop forward to the eye and wind down at head of fly. (Pull chenille tightly.) Trim hair again if necessary.



8. Cut off surplus chenille at head. Finish off head winding with half hitch knots or whip finish. Finish head with two or more applications of cement. Using a large darning needle, sew in white rubber hackle

forming loops, as shown in sketch, to represent the wheels of our Corvaire Greenbrier Sports Wagon.



9. Cut off surplus rubber hackle, and run drop of cement down from top as well as at base of wheel loops on underside of body. You've now got a bass bug that attracts fish as readily as a deer hair mouse or hair bug.

Try the **CORVAIR LAKEWOOD** for a really new experience in wagoning. It's the thrift wagon that's years ahead in engineering, in styling, in all-around family utility.



It's got four-door convenience, seating comfort for six passengers, rear cargo space *plus* a trunk up front, superior traction and handling. And it's so economical to own.

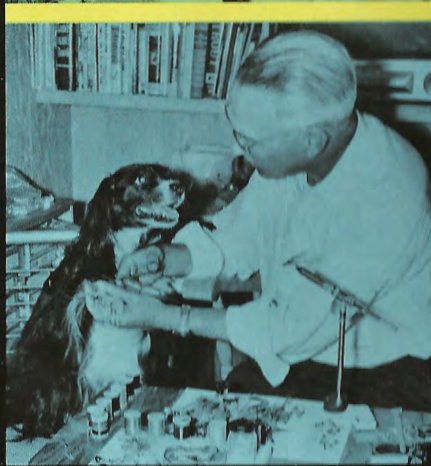


**BROOKWOOD  
6-PASSENGER**

**GREENBRIER  
SPORTS WAGON**







NOTHING "CLIPPABLE" IS SAFE IN THE REA HOUSEHOLD. Bits of fur, feathers, chenille, and chamois cloth lying about the house find their way into the thousands of flies tied by Fred Rea. Even Skippy, the Reas' cocker spaniel, obligingly contributes a few hairs from his coat on occasion. It's all part of Fred Rea's famous hobby. During the day, Fred works as the Budget Supervisor in Chevrolet's advertising department. But at night his creative efforts turn to the fishing flies that have made him a recognized amateur authority on fly-tying.

